

MVSY-188 series

SOLENOID VALVE

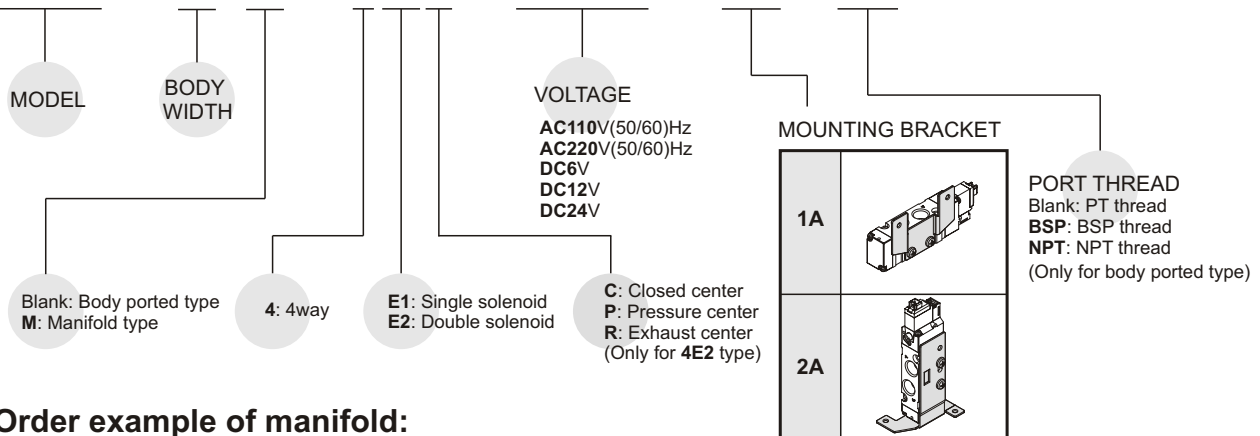


Specification:

Model	MVSY-188-4E1	MVSY-188-4E2	MVSY-188-4E2C.P.R
Bore No.	8A		
Port size	PT 1/4		
No. of port	5		
No. of position	2	3	
Medium	Air		
Operating pressure range	1.5~7 kgf/cm ²	2~7 kgf/cm ²	
Proof pressure	10 kgf/cm ²		
Effective orifice	15 mm ²	12 mm ²	
Response time	23 ms	50 ms	
Ambient temperature	+5~+50°C		
Voltage	AC110V, AC220V (50/60)Hz, DC6/12/24V		
Power consumption	AC=1.6 / 2.5VA, DC=1.2W (LED indicator)		
Available voltage range	±10%		
Insulation class	F class		
Weight	84 g	106 g	116 g

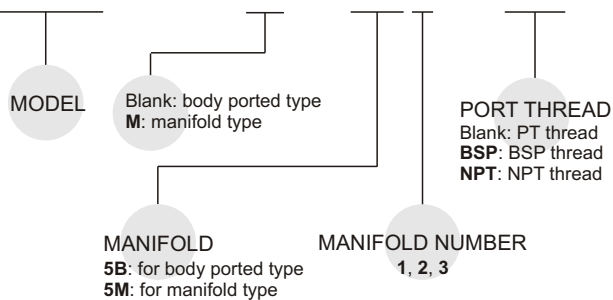
Order example of valve:

MVSY – 188M – 4E2C – AC110 – 1A – BSP

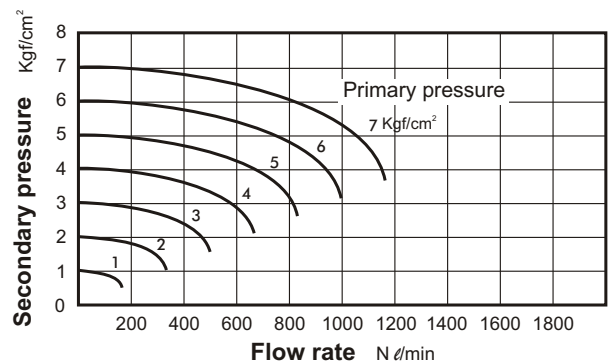


Order example of manifold:

MVSB – 188M – 5M3 – BSP



Flow features:



※Use the same manifold with MVSB.

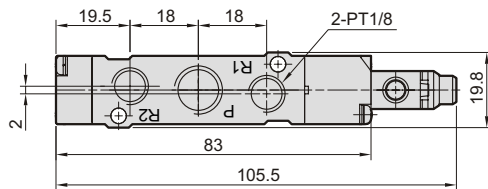
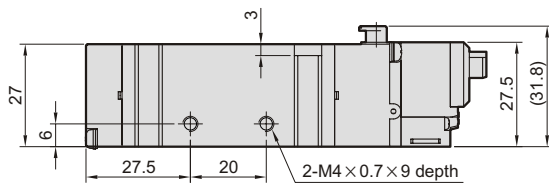
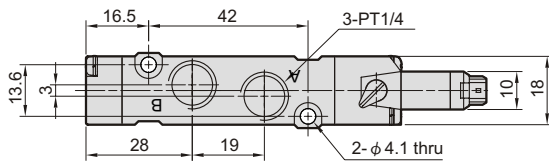
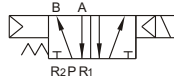
MVSY-188

SOLENOID VALVE

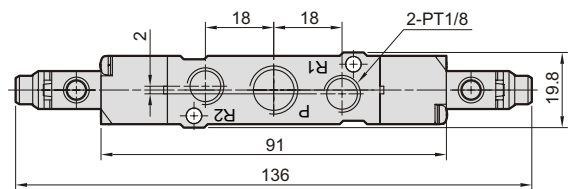
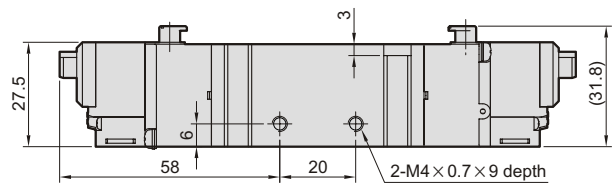
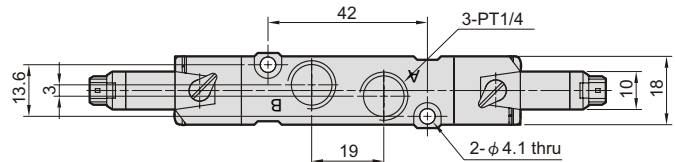
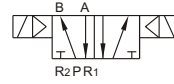


Dimensions:

MVSY-188-4E1



MVSY-188-4E2

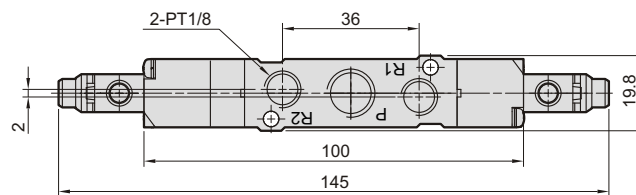
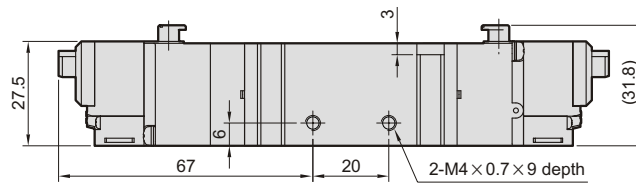
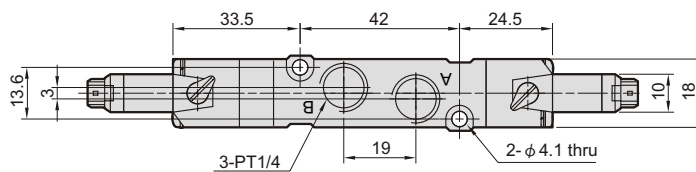
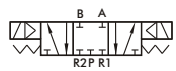


MVSY-188-4E2C.PR

MVSY-188-4E2C

MVSY-188-4E2P

MVSY-188-4E2R



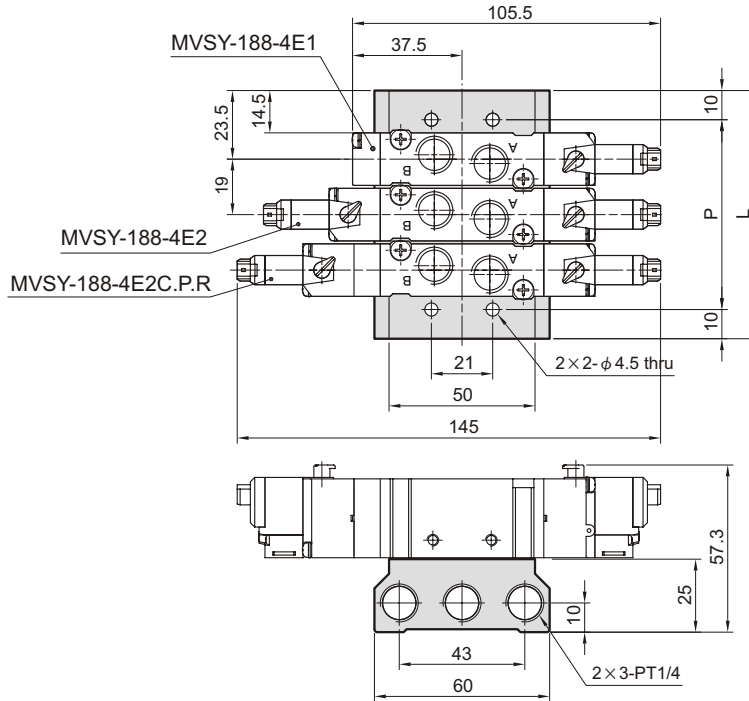
MVSY-188

SOLENOID VALVE



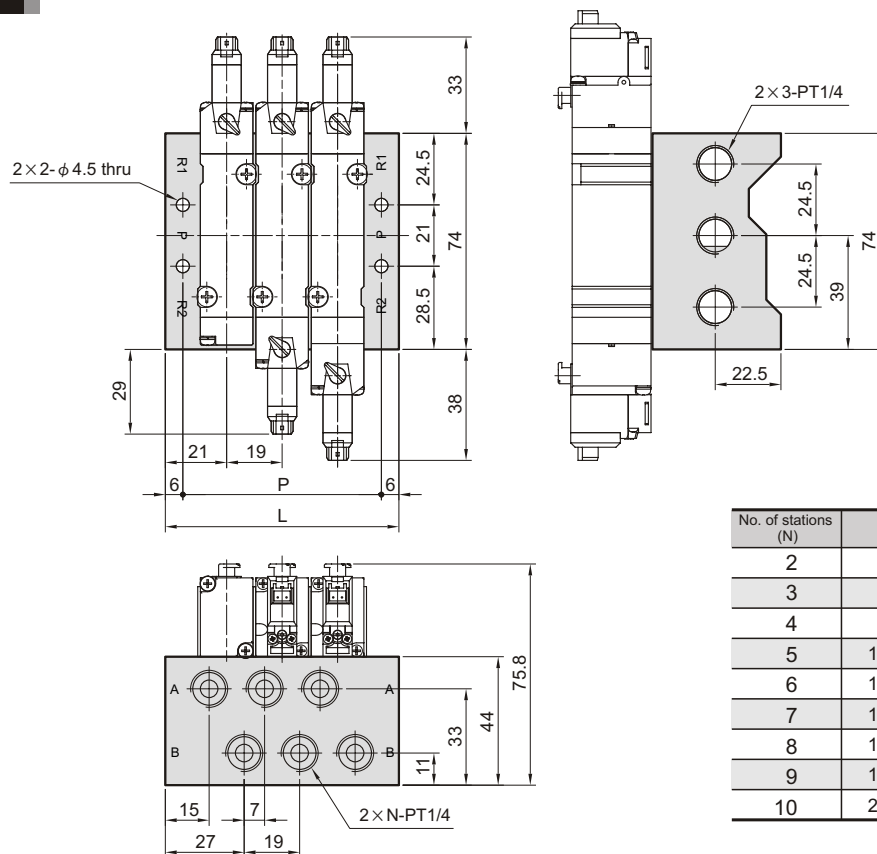
Manifold of solenoid valve:

5B*



No. of stations	P	L
2	46	66
3	65	85
4	84	104
5	103	123
6	122	142
7	141	161
8	160	180
9	179	199
10	198	218

5M*



No. of stations (N)	P	L
2	49	61
3	68	80
4	87	99
5	106	118
6	125	137
7	144	156
8	163	175
9	182	194
10	201	213

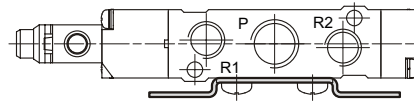
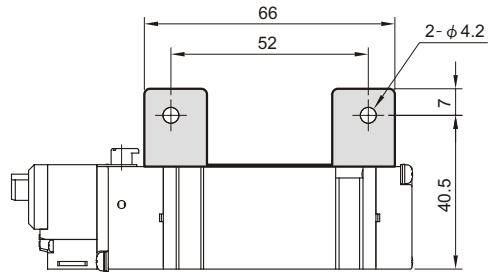
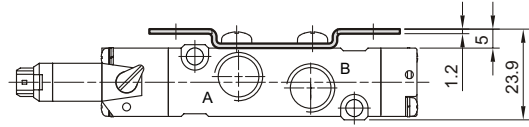
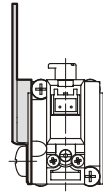
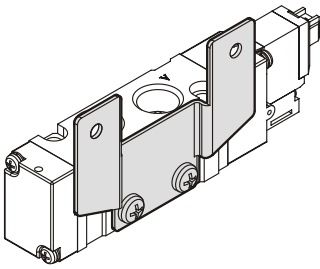
MVSY-188

SOLENOID VALVE



Mounting bracket:

1A



2A

